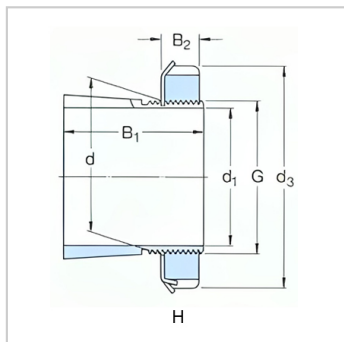


紧定套

d1 17-75mm-H307+KM7+MB7

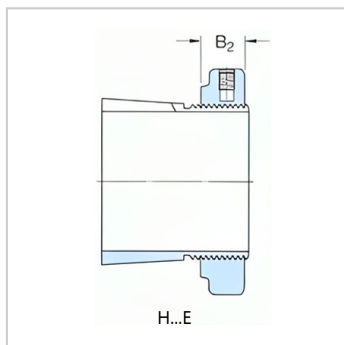
参数信息:

尺寸:



d :	30
d :	35
d :	52
B :	35
B :	9
G :	M35 × 1.5
质量 :	0.14

型号:

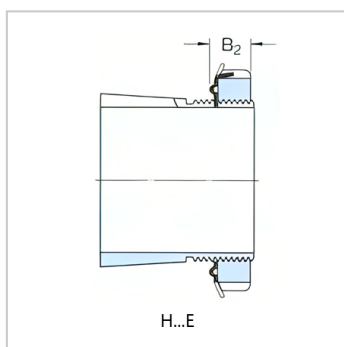


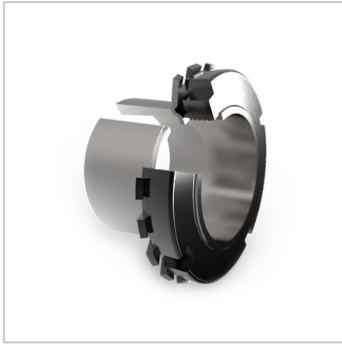
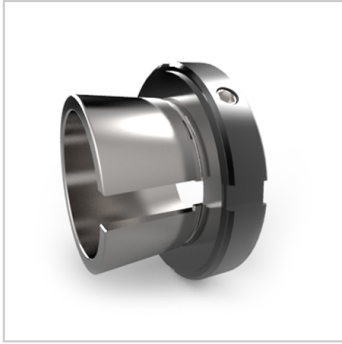
带锁紧螺母和锁定装置的紧定套: H307

锁紧螺母: KM7

锁紧装置: MB7

适用的液压螺母: -





: